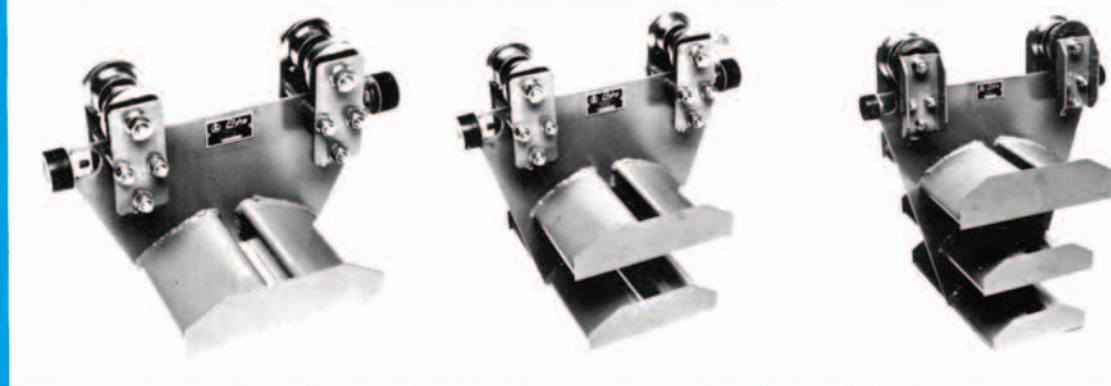


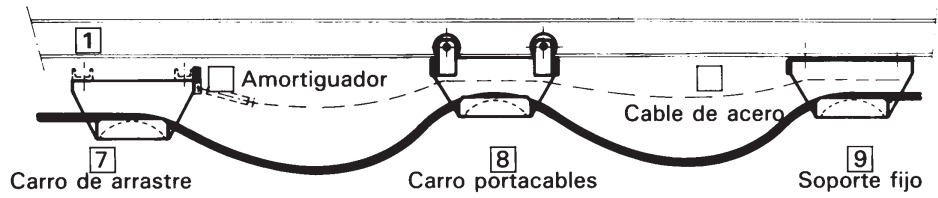
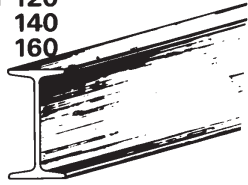
SISTEMAS FESTON



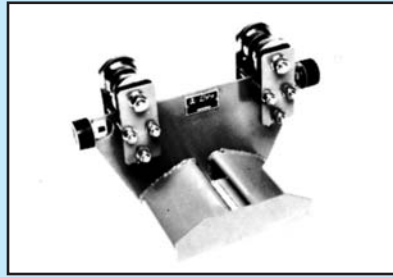
CARROS PORTACABLES SOBRE PERFIL IPN-1025



1 IPN 120
140
160

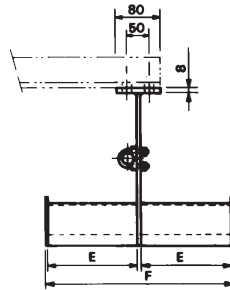
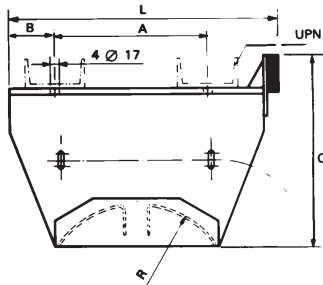


CARROS



TIPO ESN

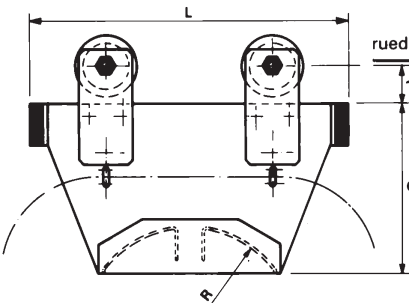
7 CARRO DE ARRASTRE



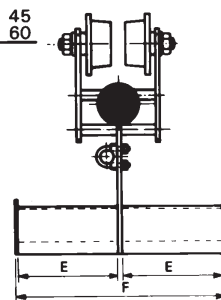
CODIGO	∅ máx. de cable	A	B	C	E	F	L
ESN 250	26	205	95	255	120,5	250	340
ESN 350	34	250	120	255	169	350	420
ESN 450	44	350	120	275	219	450	520

CODIGO	R	UPN
ESN 250	130	80
ESN 350	170	100
ESN 450	220	100

8 CARRO PORTACABLES



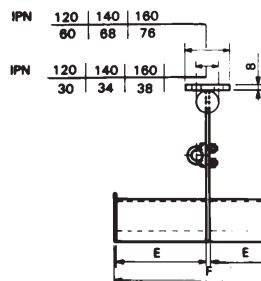
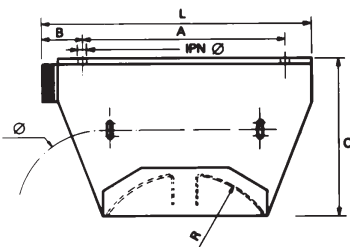
rueda: ∅ 60 = 45
∅ 90 = 60



CODIGO	∅ máx. de cable	C	E	F	L	R
ESN 250	26	197	120,5	250	370	130
ESN 350	34	197	169	350	450	170
ESN 450	44	217	219	450	546	220

CODIGO	Carga máx. por carro Kg.
ESN 250	175
ESN 350	275
ESN 450	350

9 SOPORTE FIJO



IPN 120 - ∅ 11
140 - ∅ 11
160 - ∅ 14

CODIGO	∅ máx. de cable	A	B	C	E	F	L
ESN 250	26	270	50	205	120,5	250	340
ESN 350	34	300	75	205	169	350	420
ESN 450	44	400	75	225	219	450	520

CODIGO	R	∅
ESN 250	130	6
ESN 350	170	8
ESN 450	220	8

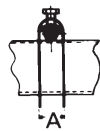
RUEDAS



Acero templado galvanizado

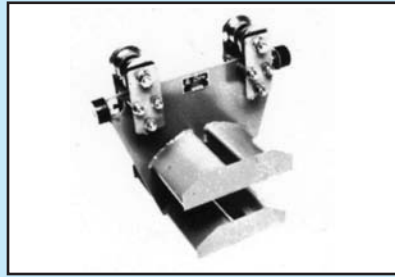
∅ 60 : V = 80 m/min
∅ 90 : V = 140 m/min

ABRAZADERAS



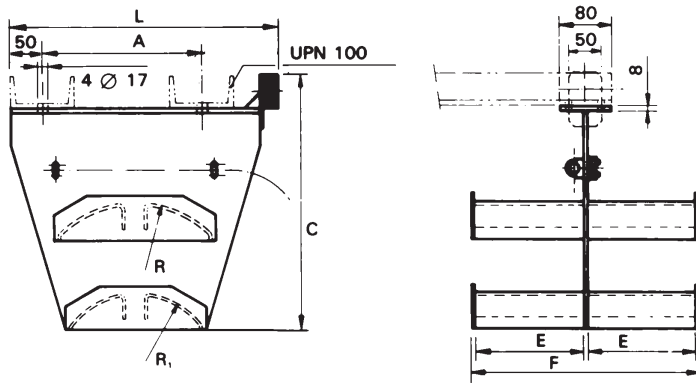
∅ del cable	8-12	12-16	16-20	20-24	24-28	28-32	32-36	36-42	42-44
CODIGO	CR12	CR16	CR20	CR24	CR28	CR32	CR36	CR42	CR44
Cota «A»	17	22	25	29	32	37	41	45	50

CARROS



TIPO EDN

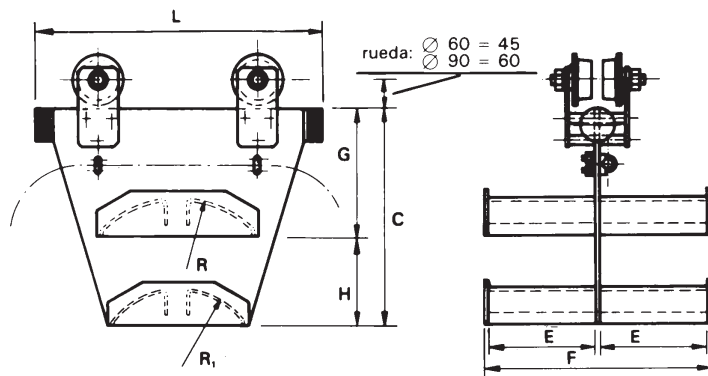
7 SOPORTE DE ARRASTRE



CODIGO	∅ máx. de cable	A	C	E	F	L	R
EDN 350	34	250	395	169	350	420	170
EDN 450	44	350	427	219	450	520	220

CODIGO	R ₁	
EDN 350	130	
EDN 450	170	

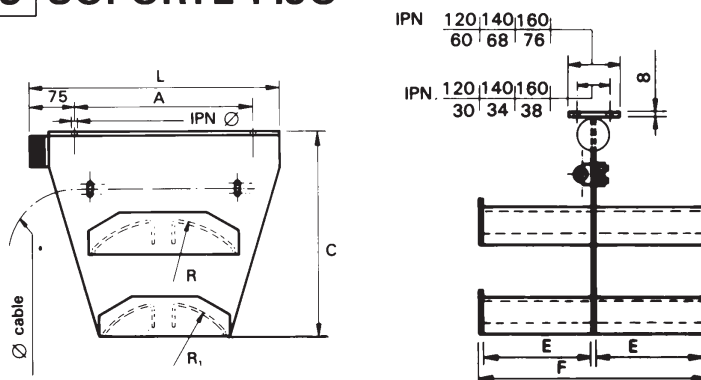
8 CARRO PORTACABLES



CODIGO	∅ máx. de cable	C	E	F	G	H	L
EDN 350	34	337	169	350	197	140	450
EDN 450	44	369	219	450	217	152	550

CODIGO	R	R ₁	Carga máx. por carro Kg.
EDN 350	170	130	275
EDN 450	220	170	350

9 SOPORTE FIJO



CODIGO	∅ máx. de cable	A	C	E	F	L	R
EDN 350	34	300	345	169	350	420	170
EDN 450	44	400	377	219	450	520	220

CODIGO	R ₁	∅
EDN 350	130	8
EDN 450	170	8

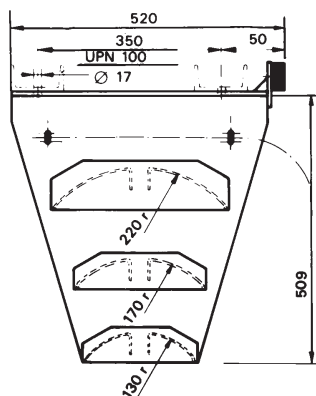
IPN 120 - ∅ 11
140 - ∅ 11
160 - ∅ 14

CARROS

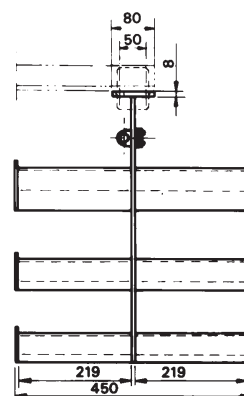


TIPO ETN

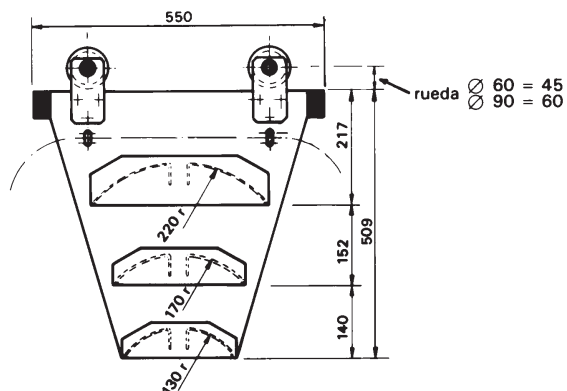
7 SOPORTE DE ARRASTRE



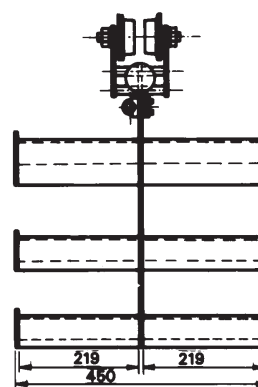
**CODIGO
ETN 450**



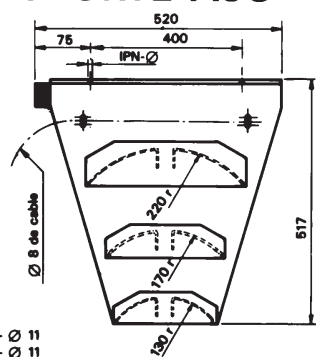
8 CARRO PORTACABLES



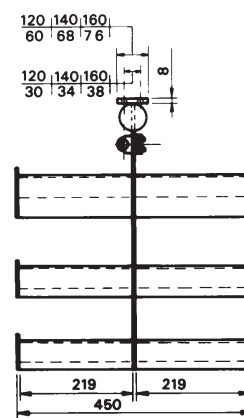
**CODIGO
ETN 450**



9 SOPORTE FIJO



**CODIGO
ETN 450**



- IPN 120 - $\varnothing 11$
- IPN 140 - $\varnothing 11$
- IPN 160 - $\varnothing 14$



Plg. Industrial 103 • C/. Urune 1 - 3 • C/. Irurzun, 1 - 6
20100 LEZO (GUIPUZCOA)

Apartado 85 - 20100 RENTERIA (GUIPUZCOA)
Tlfs. 943-524200 / 04 • Fax 943-523200
e-mail: elytra@elytra.es